

Adult Learning Systems- Lower Michigan Newsletter

3rd & 4th Quarter April - September 2024

8170 Jackson Rd
Suite F
Ann Arbor, MI 48103
734-408-0112

In this Issue

CEO'S Corner

Quarterly Winners

New home purchase

Vehicle upgrades

Around ALS-LM

Staff appreciation event

CEO's Corner

Time continues to fly by at ALS-LM, and this year was no exception. We are proud to celebrate the many accomplishments and initiatives that have flourished throughout the organization. As we look ahead to the new fiscal year, we remain committed to focusing on direct care wages and incentives while upholding the quality services we are known for.

We encourage staff and consumers to share their feedback to help shape future organizational planning and guide the forecasting of funds and goals. Thank you to everyone who makes a difference at ALS-LM. Together, we are building a brighter future!

DCW & Manager of the Quarter Winners

We'd like to take a moment to congratulate our dedicated direct care workers who were nominated for their hard work this quarter!



Ephraim Israel
Home Manager
Vivian

Ephraim took over the Vivian home and has made a big difference within two months, and is still learning. He has built a good relationship with the Monroe county staff, and has made the consumers feel more at ease. He even came in during his religious times to ensure the staff and the consumers were safe during an emergency.

Tanisha was very helpful during the transition of management and staffing crisis. She stayed late and came in early on many occasions. She gave important information about the participants to help us get to know them. She was also eager and receptive to learn policies that she had not previously been trained on.



Tanisha Raymond-Levert
Direct Care Worker
Sugarbush



Christine Trombley
Direct Care Worker
Bayridge

I cant say enough great things about Chrissy. She never calls off, always works a shift when asked, and treats the ladies with dignity and respect. Her progress notes are amazing, and she does way more than is expected of her. She deserves this award!

Quarterly Winners Cont.



Markham has been with the company for less than a year in this short time he has done an amazing job helping to build up the Cherrywood home. He has a great rapport with the guardians and works very well with the staff and consumers at the Cherrywood home. Markham worked diligently to ensure the home was ready for the CARF accreditation. He always comes to work with a positive attitude and greets the consumers with a smile.

Markham Humphrey
Home Manager
Cherrywood

Sarita Ferguson
Direct Care Worker
Evanston

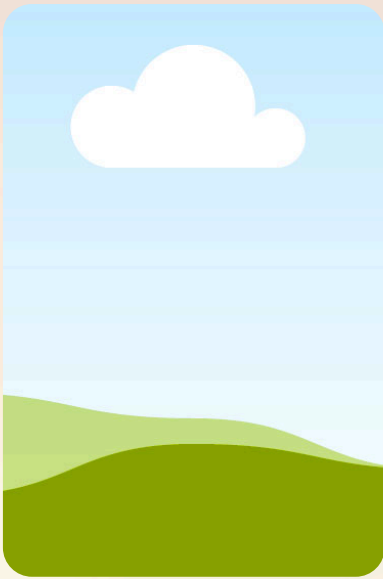
Sarita is always on time for work, rarely calls off, and always treats the guys with dignity and respect. She is very thorough when it comes to the medication, making sure the counts are correct and calls the pharmacy when meds are low. She makes sure she completes the job duties assigned to her and will always problem solve before calling her supervisor.



Ciera helps make sure the residents go on outings, and assist with grocery and supply shopping. One highlight is that she has taken much interest in one of our residents, especially during her prom. She took her dress and shoe shopping, often does her hair and takes her on special outing's. She's really boosted NB's self esteem during these very important moments in her life, and made her feel like a little lady! Ciera is great with the residents and is great to work with!



Ciera Streeter-West
Direct Care Worker
Cherrywood



Teara picked up on the flow of the home very quickly while learning the consumers and her job duties. She ensures that the consumers look and feel good by keeping by doing their hair and utilizing her own funds to purchase hair supplies. She ensures all her trainings are completed on time, is flexible with her schedule, and picks up shifts at the other sites when needed. She is a great asset to our ALS-LM team!

Teara Moore

*Direct Care Worker
Seybold*

Uinecrest Opens!



Uinecrest officially opened their doors at the end of the 4th quarter! The move was part of the former Sugarbush home in Chesterfield, MI that relocated to a new home in Chesterfield, MI. We appreciate everyone who made this move a smooth transition for our consumers and all the hard work to close a home and open a new one. It truly showed the amazing teamwork at ALS-LM.

Jamestown's new Transit!



Retroactive Wage Grid Increase

ALS-LM was pleased to announce a .50\hour increase effective August 4, 2024, retroactive to October 1, 2023. We continue to develop incentive programs and competitive wages to recruit and retain talented staff.

Around ALS-LM

Let's take a look and see what our homes did throughout the quarter!



Cinco De Mayo Party
Briarwood



Port Huron Lighthouse
Evanston



Around ALS-LM Cont.



Garden Bros Nuclear Circus
Seybold



Walter and Burke Park
Romeo & Evanston residents!



Stony Creek Park
Jewell Pointe

ALS-LM Staff Appreciation Event!

We brought back our annual staff event to show our direct care staff how much we appreciate them for all the hard work they do to care for our residents!

Sat 8-31-24 Detroit Tigers vs Boston Red Socks



Tiffany & family!



Go Tigers!!



ALS-LM Family!



Romeo Plank Residents



Lindsey & Friend!



Sherri & Raven!



Jenna & friend!

